

INTRODUCTION TO SCRATCH



By **STEMPowering Girls**
stempoweringgirls.org

GO TO [HTTPS://SCRATCH.MIT.EDU](https://scratch.mit.edu)

- If you have an account, click **Sign In** in the top right corner.
- If you need to make an account, click **Join Scratch** in the top right corner.
- Once you are done, click **Create**.



STEMPOWERING GIRLS

[HTTPS://STEMPOWERINGGIRLS.ORG](https://STEMPOWERINGGIRLS.ORG)

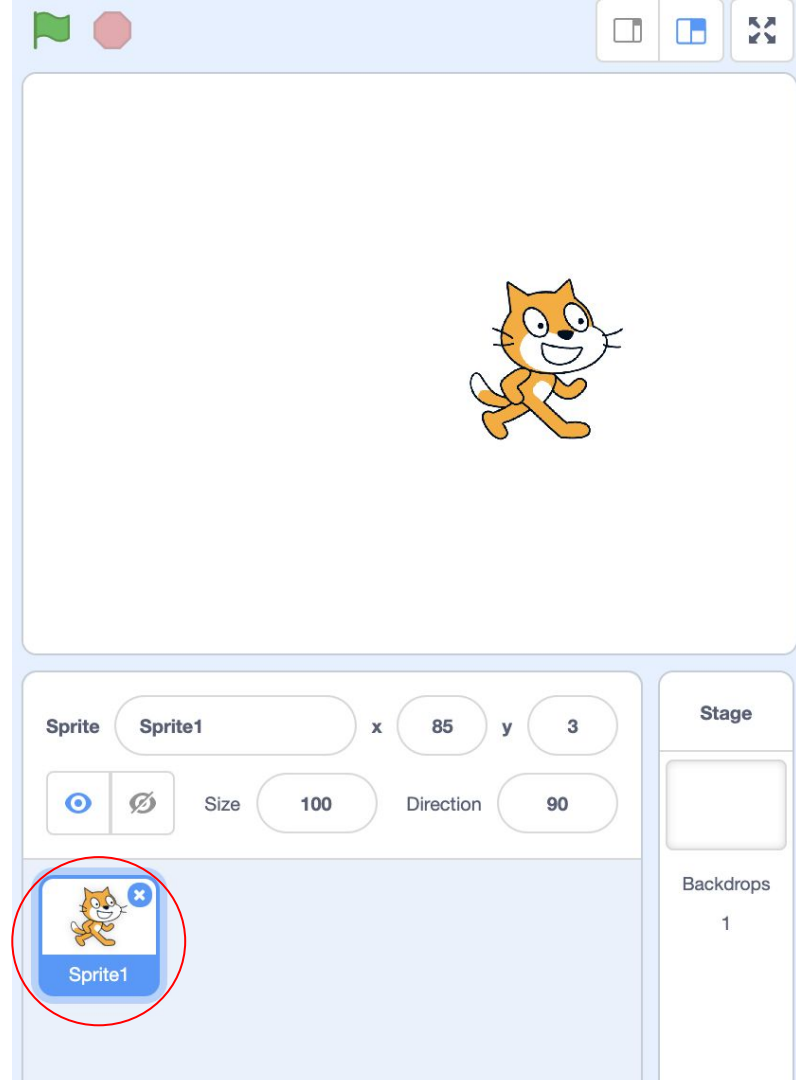
SPRITES

- A **sprite** is like a **character**.
- You can tell it what to do with **code**
-



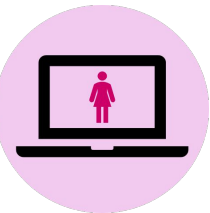
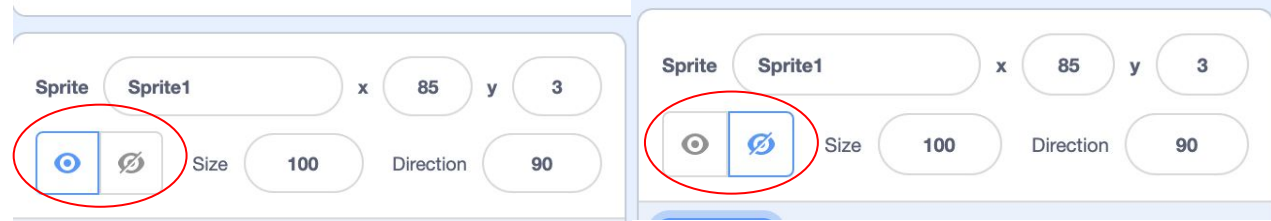
STEMPOWERING GIRLS

[HTTPS://STEMPOWERINGGIRLS.ORG](https://stempoweringgirls.org)



SPRITES

- You can make them **appear** and **disappear**

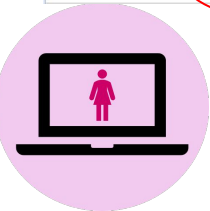
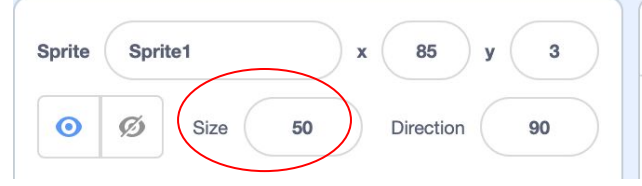
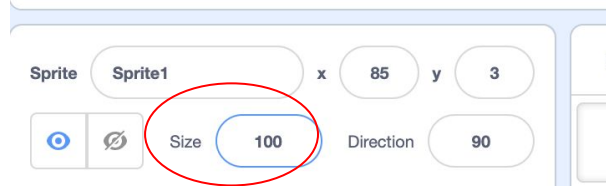
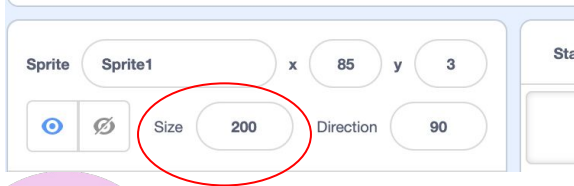
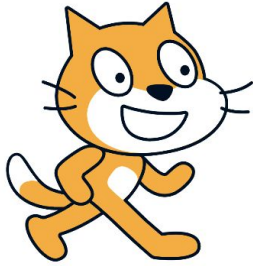


STEMPOWERING GIRLS

[HTTPS://STEMPOWERINGGIRLS.ORG](https://stempoweringgirls.org)

SPRITES

- You can make them **bigger** and **smaller**

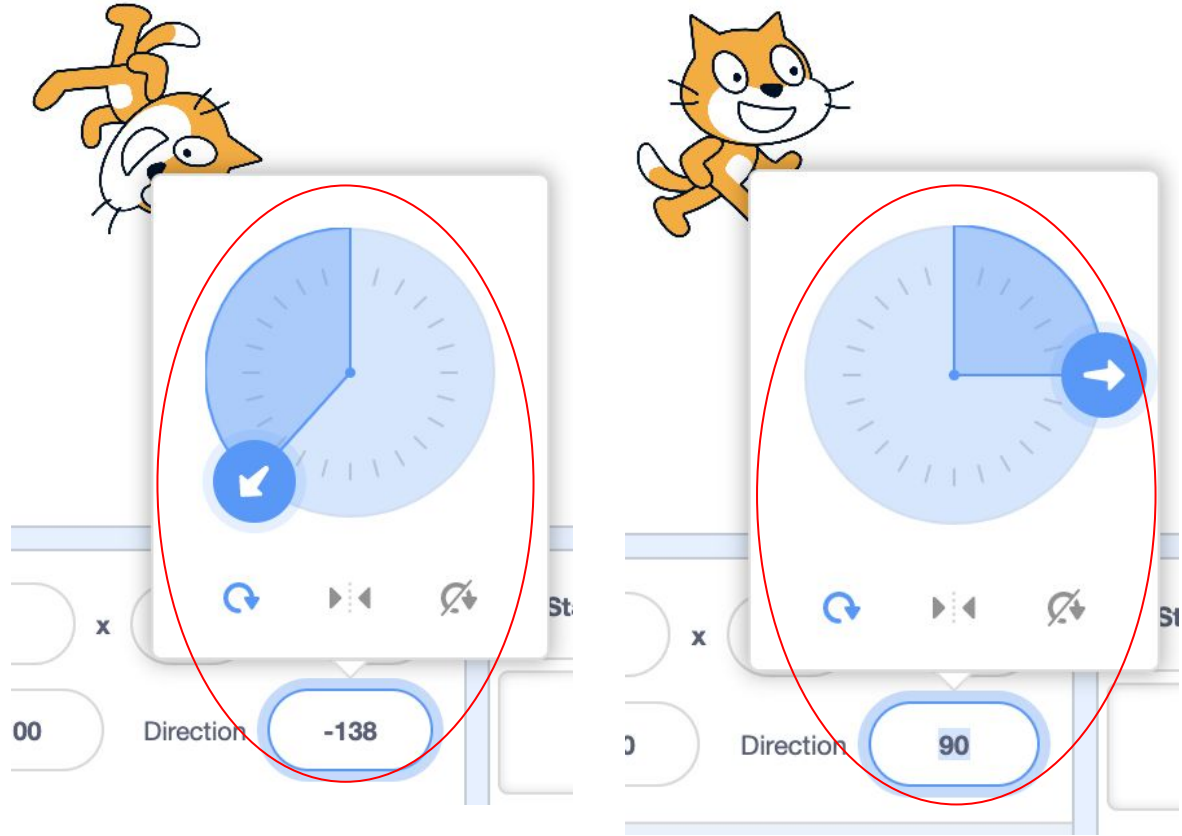


STEMPOWERING GIRLS

[HTTPS://STEMPOWERINGGIRLS.ORG](https://stempoweringgirls.org)

SPRITES

- You can change their **direction**



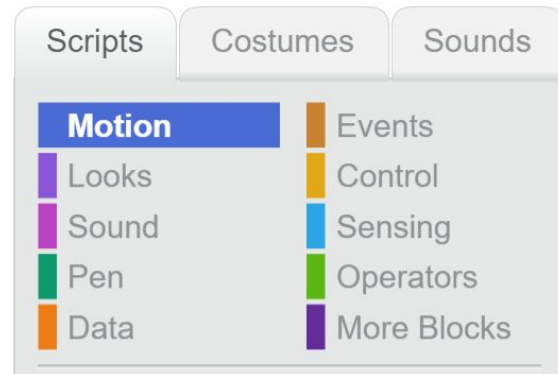
STEMPOWERING GIRLS

[HTTPS://STEMPOWERINGGIRLS.ORG](https://stempoweringgirls.org)



MOTION BLOCKS

- Check out the **Motion** blocks
- The motion blocks make the sprite do stuff like move forwards, backwards and turn



STEMPOWERING GIRLS

[HTTPS://STEMPOWERINGGIRLS.ORG](https://STEMPOWERINGGIRLS.ORG)